



LED NEON FLEXIBLE LIGHTING FOR CONTINUOUS DOT-FREE LIGHTING

Designer friendly

Create a seamless lighting effect for a high-quality finished look and stylish lighting to elevate any space.

Electrician friendly

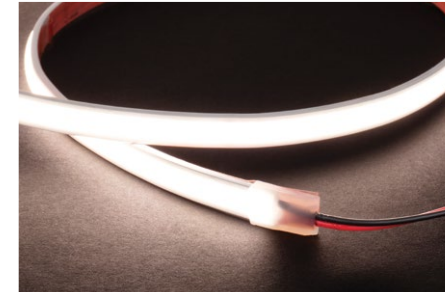
Easy-to-install under open shelving, frameless cabinetry, or in a closet using quick connect jumpers.

Variety of applications

Get creative lighting curved surfaces that aren't possible to light with rigid fixtures while still maintaining the dot-free look.

Premium Lighting

- Designed to install where lighting is meant to be seen
- The flexible, dot-free lighting choice—uses snap-connect connectors and jumpers for installation



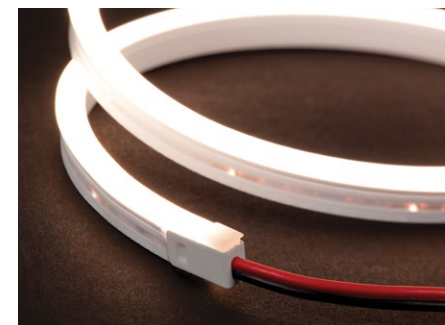
Top Bend Series

24-volt, top-bending Neon Flexible Lighting provides the finished look of a fixture in the flexible and easy-to-install construction of tape lighting. Great for applications where it's difficult to hide a rigid fixture such as in European frameless cabinetry or under open shelving; also ideal for curved surfaces.



Simple to add to Spaces

- Top Bend Series is only 4 mm tall making concealment easy in small spaces
- Side Bend Series is slim to fit into a 4 mm wide groove for curved or straight recessed lighting
- Plug-in power supply for simple installation option
- Dimmable with wireless or smart home-enabled control options



Side Bend Series

24-volt, side-bending Neon Flexible Lighting achieves a seamless lighting effect for recessed applications such as closets, in architectural accents, or in curved artistic installations.



About the Product

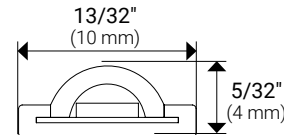
- Flexible, silicone casing with top-bending (vertical) or side-bending (horizontal) direction
- Achieve the continuous lighting aesthetics of neon lighting with the benefits of LED lighting
- Soft White 3000K or Cool White 4000K lighting options
- 24-volt DC power supply required (order separately)
- Waterproof IP66 rating for indoor/outdoor applications
- Dimmable with compatible dimmer (order separately)
- Compatible with WAV Smart Control™ devices
- No Ultraviolet (UV) or Infrared (IR)

Kelvin Temperature Options



Top Bend Neon Flexible Lighting

Single-White Lighting Ordering Information



Fixture Cross-Section
(enlarged to show detail)

Achieve the same dot-free effect of a frosted lens while maintaining the low profile, flexible qualities of tape lighting. Easy to cut and reconnect in the field.

Applications

- Under cabinets or shelves
- Frameless cabinetry
- Closets
- Curved surfaces

For additional application help and suggestions, call Design Services at 866-848-9094



24V 400 Lumens/Ft.

Lighting Width	Kelvin Temperature	Length	Lumens Per Foot	Watts Per Foot	IP Rating	Cutting	Part Number
10 mm	3000K, 4000K	16 ft.	400	3.8W (12/m)	IP66	Approx. 1-5/16"	LN4T1W24016Temp



24V 225 Lumens/Ft.

Lighting Width	Kelvin Temperature	Length	Lumens Per Foot	Watts Per Foot	IP Rating	Cutting	Part Number
10 mm	3000K, 4000K	16 ft.	225	3.6W (11.5/m)	IP66	Approx. 1"	LN2T1W24016Temp



24V 120 Lumens/Ft.

Lighting Width	Kelvin Temperature	Length	Lumens Per Foot	Watts Per Foot	IP Rating	Cutting	Part Number
10 mm	3000K, 4000K	16 ft.	120	2W (6.3/m)	IP66	Approx. 1"	LN1T1W24016Temp

Blue indicates dealer choice: Temp indicates Kelvin Temperature. LN1T1W2401630 (Example part number for 16 ft. roll of Top Bend Neon Flexible Lighting in 3000K)

Mounting Clips

Description	Dimensions	Part Number
Bottom mounting clip; clear plastic; sold individually	1/2" x 7/32" x 9/16" (12.5 mm x 5.5 mm x 14.8 mm)	L-NT-BMC-C
Loop mounting clip; clear plastic; sold individually	1/4" x 3/16" x 15/16" (7.1 mm x 4.7 mm x 23.5 mm)	L-NT-LMC-C



L-NT-BMC-C



L-NT-LMC-C

Connectors and End Cap

Description	Dimensions	Part Number
Light-to-wire connector with EZ screw-down connector; white	3 ft (1 m)	L-NT-L2W-W
Light-to-light connector; white	5/8" x 5/16" x 1-7/16" (15.3 mm x 8.5 mm x 35.8 mm)	L-NT-L2L-W
9-1/2" Linking cable; white	9-1/2" (6-3/4" wire) (241.3 mm)	L-NT-LC-W
End cap; clear silicone; sold individually	3/8" x 1/4" x 3/8" (10.3 mm x 5.3 mm x 10 mm)	L-NT-EC-C



L-NT-L2W-W



L-NT-L2L-W



L-NT-LC-W

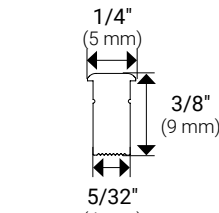
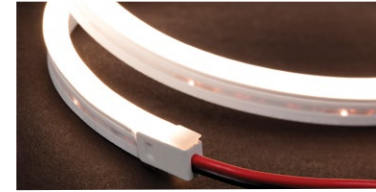


L-NT-EC-C

Customer Service: 800.445.6404 | Design Services/Tech Support: 866.848.9094 | DesignAndSupport@TaskLighting.com

Side Bend Neon Flexible Lighting

Single-White Lighting Ordering Information



Fixture Cross-Section
(enlarged to show detail)

Dot-free linear spray of light that can be recessed or mounted in a curved surface. Easy to cut in the field; cannot be reconnected.

Applications

- Closets
- Artistic installations
- Recessed into shelves or panels
- Commercial accents

For additional application help and suggestions, call Design Services at 866-848-9094



24V 80 Lumens/Ft.

Lighting Width	Kelvin Temperature	Length	Lumens Per Foot	Watts Per Foot	IP Rating	Cutting	Part Number
5.2 mm	3000K, 4000K	3.3 ft. (1m)	80	3.1W (10/m)	IP66	Approx. 1-5/16"	LN1S1W24003Temp
5.2 mm	3000K, 4000K	9.8 ft. (3m)	80	3.1W (10/m)	IP66	Approx. 1-5/16"	LN1S1W24009Temp
5.2 mm	3000K, 4000K	16.4 ft. (5m)	80	3.1W (10/m)	IP66	Approx. 1-5/16"	LN1S1W24016Temp

Blue indicates dealer choice: Temp indicates Kelvin Temperature. LN1S1W2400330 (Example part number for 3 ft. strip of Side Bend Neon Flexible Lighting in 3000K)

Mounting Clips

Recommended to use every 24"

Description	Dimensions	Part Number
Mounting clip; stainless steel; sold individually	1/4" x 3/8" x 1" (5.5 mm x 8.9 mm x 25.5 mm)	L-NS-MC-SS
Loop mounting clip; clear plastic; sold individually	1/4" x 3/16" x 15/16" (7.1 mm x 4.7 mm x 23.5 mm)	L-NS-LMC-C



L-NS-MC-SS



L-NS-LMC-C

End Cap

Description	Dimensions	Part Number
End cap; white with silicone insert; ; sold individually	5/8" x 5/16" x 9/16" (5.2 mm x 8.8 mm x 14.3 mm)	L-NS-EC-W



L-NS-EC-W

Neon Flexible Lighting Top and Side Bend Series pair well with...

Top Bend offers multiple light outputs to stand alone or complement other light sources while Side Bend creates a soft ambient glow that complements other lighting sources. Pair these products with the following to maximize lighting aesthetic.

Lighted Closet Rod



+

Puck Lights

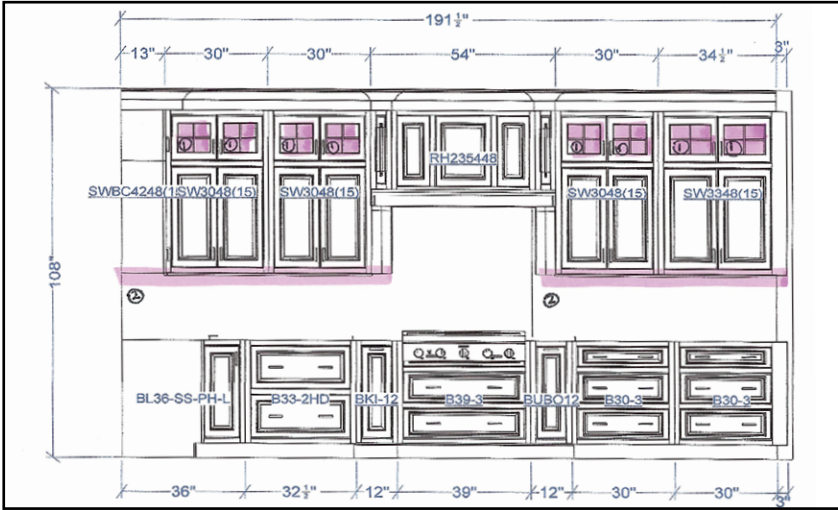


+

Dual-Mount Linear Fixtures



Customer Service: 800.445.6404 | Design Services/Tech Support: 866.848.9094 | DesignAndSupport@TaskLighting.com



What you provide

Submit the project to the in-house Design Services team at DesignAndSupport@TaskLighting.com



What we provide

Based on the project, the Design Services team will produce a professional layout with an included parts list. When you're ready to place the order, simply let your Design Services representative know or email your order to DesignAndSupport@TaskLighting.com



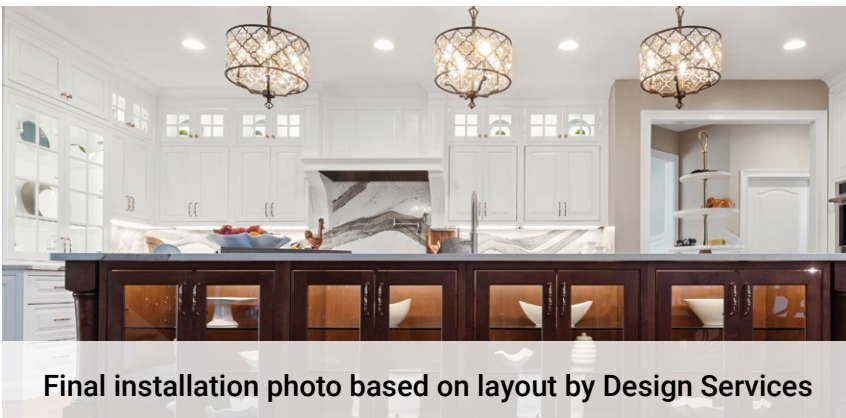
QUANTITY	SYMBOL	ITEM NUMBER	DESCRIPTION
1	[Symbol]	L-PLW1310-14-27	24 inch Radiance Series LED Tapin Light
1	[Symbol]	L-PLW1310-14-27	24 inch Radiance Series LED Tapin Light
4	[Symbol]	L-PLW1310-14-27	24 inch Radiance Series LED Tapin Light
7	[Symbol]	L-PLW1310-14-27	24 inch Radiance Series LED Tapin Light
24	[Symbol]	L-PLW1310-14-27	24 inch Radiance Series LED Tapin Light
2	[Symbol]	L-PLW1310-14-27	24 inch Radiance Series LED Tapin Light

12V

TASK lighting & power

CUSTOMER: designandsupport@tasklighting.com | JOB NAME: | DATE: | DRAWN BY: | 866-848-9094

Locations of wiring, power supplies, receivers, and switches are for illustration and do not indicate required installation locations. Installation locations are based upon job site conditions and should be in conformance with current NEC's and local building/electrical codes. Additional components may be needed when wireless controlling is set up by zones or areas. *Voltage drop may occur after you have exceeded a distance of 32' of both wire and/or lighting away from the power supply*



Have technical questions?

Our dedicated (and free!) Design Services Team is available to help with technical support, product questions, layout suggestions, and advice on the best products for any residential and commercial project.

Contact **Design Services and Technical Support** at 866-848-9094 or DesignAndSupport@TaskLighting.com for free layout and design service, help with installation and product selection, and for Cut-To-Length project quotes.

Contact **Customer Service** at 800-445-6404 or CustomerService@TaskLighting.com for quotes, ordering, order tracking, returns, and warranties.



Learn more at www.TaskLighting.com